

TECHNICAL DATA SHEET

SK3VAC-53L

Industrial vacuum trap for resin

► DESCRIPTION

A big industrial vacuum trap with silicon vacuum tight rim was developed to trap resin excess in the infusion process. The cover of the tank is made of plexiglass which helps to control pail filling in the tank with resin. Fittings construction allows to place the tubes end leads into the tank by putting them into the openings of the clamping fitting and twirling clamping ring. Thus in case of resin entry into the trap fitting will remain clean. At the end of the process the fixing fitting ring has to be untwisted and the tube is pulled out.

Each tank is equipped with:

- 20 L polypropylene pail for resin trapping aimed at preventing the tank from contamination;
- Vacuum gauge ;
- Valve for manual flow control;
- Vacuum lever regulator (option);
- Quick disconnect plug SK2VV232-4 1/4" to connect vacuum to the tank;
- 4 or 8 clamping fittings for the tube with external diameter 12mm to connect resin channels. (Fittings for tubes 10mm and 16mm are available on special order).



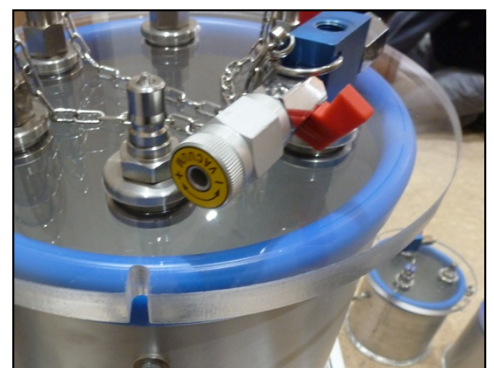
Pic. 1: 4 channel cover without vacuum level regulator



Pic. 2: Fitting



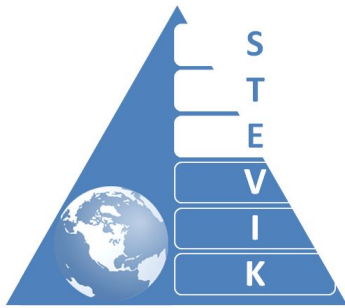
Pic. 3: Open cover with clamped tube



Pic. 4: Top view

► TECHNICAL DATA

Tank volume:	53 litres
Tank diameter:	41,9 cm
Total height of the tank:	49 cm



TECHNICAL DATA SHEET

SK3VAC-53L

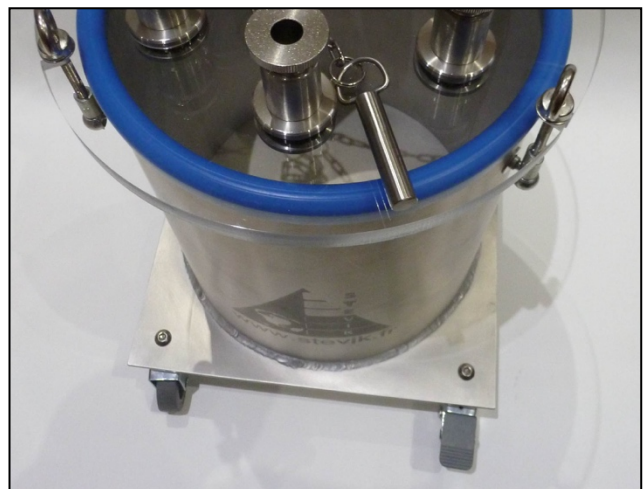
Industrial vacuum trap for resin

Tank material: aluminum
 Fitting material: stainless steel
 Tube connection: 4 or 8 clamping fittings for tube 12mm
 Vacuum connection: quick disconnect plug 1/4"

Reference	Description
SK3VAC-53L4WS12x4	Resin catch reservoir 53 l, incl. seal system, with square base with 4 wheels incl. 1 manual vacuum release valve, 1 vacuum gauge, 1 quick disconnect vacuum outlet 1/4 " BSP, 4 push fittings for tube 12mm ID
SK3VAC-53L4WS12x4REG	Resin catch reservoir 53 l, incl. seal system, with square base with 4 wheels incl. 1 manual vacuum release valve, 1 vacuum gauge, 1 manual vacuum level regulator, 1 quick disconnect vacuum outlet 1/4 " BSP, 4 push fittings for tube 12mm ID
SK3VAC-53L4WS12x8	Resin catch reservoir 53 l, incl. seal system, with square base with 4 wheels incl. 1 manual vacuum release valve, 1 vacuum gauge, 1 quick disconnect vacuum outlet 1/4 " BSP, 8 push fittings for tube 12mm ID
SK3VAC-53L4WS12x8REG	Resin catch reservoir 53 l, incl. seal system, with square base with 4 wheels incl. 1 manual vacuum release valve, 1 vacuum gauge, 1 vacuum level regulator, 1 quick disconnect vacuum outlet 1/4 " BSP, 8 push fittings for tube 12mm ID



Pic. 5: Top view of catch reservoir with 4 push fittings



Pic. 6: SK3VAC-53L4WS12x4

The product can slightly differ from the photo depending on complete set.